



Vision Statement

This Dorset Trees, Woods and Forests Strategy incorporates the aims of national, regional and county strategies and frameworks including the Government's strategy for Trees, Woodlands and Forests, the Woodfuel Strategy for England, the South West Regional Woodland & Forestry Framework and Woodfuel Framework.

The vision for Dorset's trees, woods and forests is...

The vital contribution of Dorset's trees, woods and forests for landscape, biodiversity, recreation, culture and heritage will only be sustained and improved through an integrated, strategic approach. Their environmental, social and economic outputs will be maximised through planned and coordinated management providing opportunities to meet the needs of the future.



Diverse woodland landscape © David Rees

Aims of Strategy

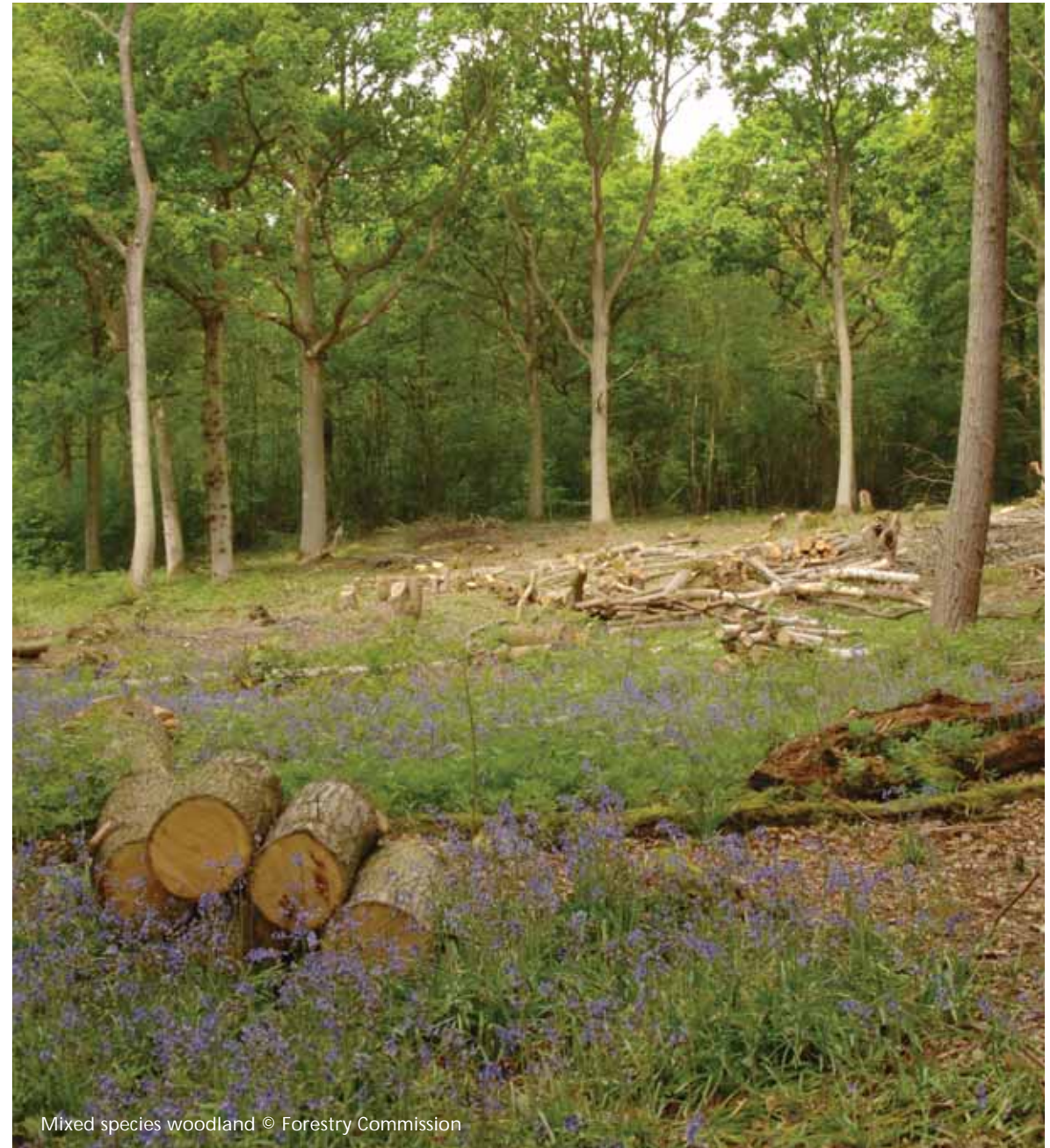


10



The aims of the Dorset Trees, Woods and Forests Strategy are to:

- identify and encourage appropriate access, health and tourism opportunities;
- bring more woods and forests into active management and improve their quality and extent;
- increase woods and forests open for public access and recreation;
- bring together policy and action from multiple interests in one place provide a framework for integrated action for Dorset's trees, woods and forests;
- provide the first ever focus on Dorset's trees, woods and forests assets and the benefits they can provide to ensure their continued contribution in terms of social, environmental and economic benefits;
- promote the value and contribution of trees, woods and forests to key decision makers e.g. woodland owners, planners, politicians, developers and health services;
- provide an evidence base for identifying local priorities and actions;
- support and complement business development through encouraging new wood product markets, such as woodfuel, identifying potential carbon off-setting schemes and mitigating local developments.



Policies

Note: the policies below are not in priority order.

Environmental

Ensure that planting and management maximises opportunities for local biodiversity and landscapes whilst identifying opportunities and constraints for the conservation of archaeological features, soil and water resources.

Maintain and enhance Ancient Semi-Natural Woodlands (ASNW) and restore Plantations on Ancient Woodland Sites (PAWS).

Address the causes of woodland decline and promote the active management of trees, woods and forests to maximise biodiversity gain, taking into consideration any historical/archaeological features.

Provide guidance for the management of trees, woods and forests on non-woodland habitats to ensure that appropriate opportunities for open habitat restoration are taken

Reverse woodland and habitat fragmentation through coordinated planning and management and a landscape scale approach to biodiversity management.

Increase coordinated management of deer, grey squirrels, and other damaging invasive species to prevent the deterioration of woodland habitats.

Protect trees in parklands, orchards, urban areas, hedgerows, wood pasture, veteran trees and other in-field trees to ensure their continued survival.

Reduce the effects of climate change by new plantings to aid carbon offsetting, considering appropriate tree species to address the threats and opportunities of climate change and encouraging the active management of unmanaged woodlands and forests.



Hazel coppice with standards
© Forestry Commission

Social

Use trees and woodlands to help minimise the impact of developments in built up areas (e.g. noise reduction, pollution reduction, amenity planting and recreation areas).

Identify and encourage appropriate access and health opportunities through green infrastructure schemes and improving access for people to use and enjoy woodlands in ways that benefit physical and mental health, education and learning.

Create urban and community woodlands which frame and connect urban and rural areas, improving the quality of a place.

Maintain competent woodland skills base by promoting and facilitating appropriate skills training.

Increase people's awareness and understanding of the cultural, archaeological and historical assets of trees, woods and forests in Dorset.



New urban woodland
© Forestry Commission

Economic

Encourage appropriate, sustainable, revenue-generating leisure activities.

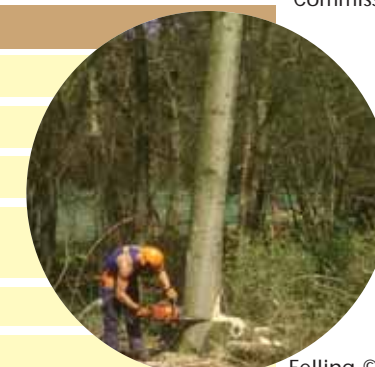
Support existing traditional markets through improved infrastructure and promotion of locally produced goods.

Identify and develop new wood product markets and establish a cooperative approach to add value to timber products.

Work with public and private sector partners to target development of the woodfuel industry in Dorset by identifying potential 'clusters' of users and 'woodfuel reserves' within the county.

Encourage woodland management and help businesses promote woodland products.

Increase take-up of accreditation of local woodland products produced in a sustainable and sensitive manner through Direct from Dorset, Woodcert, FSC and other appropriate bodies.



Felling © Forestry Commission

